



Official Newsletter

BOURSE REGIONALE DES VALEURS MOBILIERES S.A.

SOCIETE ANONYME AU CAPITAL DE FCFA 596 080 000

Head Office: Abidjan - COTE D'IVOIRE

Address: 18, Rue Joseph Anoma (Rue des Banques) - AAbidjan E-mail: brvm@brvm.org

Tel: (225) 20 326 685 / 20 326 686 Fax : (225) 20 326 684

Site Internet: www.brvm.org

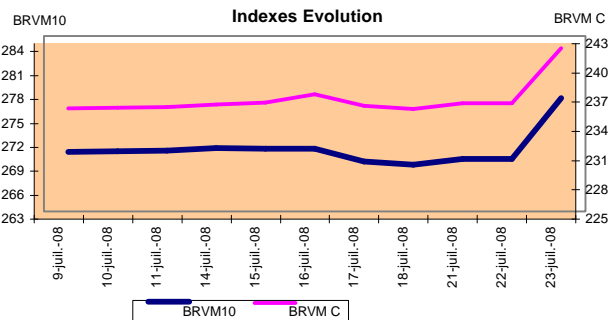
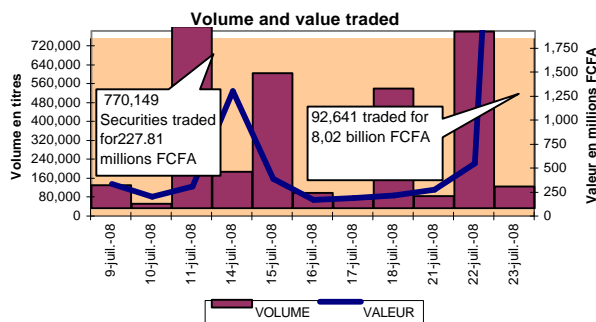
Newsletter c July 23, 2008

Vol : 11 N° : 142

July 23, 2008 Session

References Indexes

Base = 100 au 15 septembre 1998	Close	Change		Prev. Précédente	Market Capitalization CFA
		Value	%		
BRVM 10	277.23	7.66	2.84%	269.57	3,790,363,797,100
BRVM Composite	241.73	5.62	2.38%	236.11	4,524,612,056,910
Mandatory Market Capitalization (CFA)					524,461,768,727



Sectoral Indexes

Base = 100 on June 14th, 1999	Close	Change		Close Précédente	Number of Companies
		Value	%		
BRVM - Industry	148.55	0.04	0.03%	148.51	14
BRVM - Services Publics	540.13	19.99	3.84%	520.14	3
BRVM - Financial	134.47	3.81	2.92%	130.66	6
BRVM - Transportation	355.94	0.00	0.00%	355.94	2
BRVM - Agriculture	431.70	0.18	0.04%	431.52	5
BRVM - Distribution	168.99	0.03	0.02%	168.96	7
BRVM - Autres Secteurs	53.15	0.00	0.00%	53.15	1

Market Summary

	Volume Traded	Total Value Tradede (F CFA)	Number of Transactions	Number of securities Traded	securities		
					Gains	Losses	traded
Stocks	92,626	8,020,016,460	270	18	8	2	8
Bonds	15	136,668	4	2	0	0	2
Rights	0	0	0	0	0	0	0

Most Actives securities

Most Actives securities		Raise			Drop		
securities	Volume	securities	Price	Change	securities	Price	Change
ECOBANK TRANS. IF	47,660	SONATEL SN	185,000	7000	SMB CI	59,900	-100
SONATEL SN	43,000	PH CI	21,500	500	SIVOA CI	10,985	-10
PALM CI	402	CIE CI	19,000	295			
CIE CI	322	ABIDJAN CATERING C	6,800	100			
SIVOA CI	320	FILTISAC CI	8,075	60			

International Exchange indexes

African exchanges	Indexes	Close 23-juil.-08	Change Previous Session	indexes 31-déc.-07	Other exchanges	Indexes	Close 23-juil.-08	Changes Previous Session	Indexes au 31-déc.-07
CASABLANCA (*)	MADEX	11926.9	-0.15%	10464.34	LONDRES (**)	FOOTSIE 100	5422	1.08%	6456.9
LAGOS (*)	NSE	51544.11	-1.07%	57990.22	NEW YORK (*)	DJIA	11602.5	1.18%	13264.82
TUNIS (*)	BVMT	2115.75	-0.16%	1936.78	TOKYO (**)	NIKKEI 225	13312.93	0.97%	15307.78

(*) Indexes de la veille

(**) Indexes à 11 H GMT

Announced Coupons

Symbol	securities	Coupon		
		Other exchanges	Detachment Date	Payment Date
SOGC	SOGB CI	3,330	24-juil.-08	28-juil.-08
SAFC	SAFCA CI	2,253	25-juil.-08	29-juil.-08
BNBC	BERNABE CI	1,125	25-juil.-08	29-juil.-08
SMBC	SMB CI	887	4-août-08	6-août-08

ND: Not available

STOCKS MARKET

July 23, 2008 Session

Symbol	Security	Classify Stock exchange Capitalization	Qty	Cours Bid. /Ask.	Qty	Curr. Price	Volume	Value	Previous Price	Curr. Price	Max. Variances Next Session	Curr. Price		Max. Variances		
												Next Session	Date	Low	High	
INDUSTRY - SECTOR																
CABC	SICABLE CI	C	286	16800 /		NC			16,750	16,750	15,495	18,005	990	26-mai-08	14,350	24,000
CDAC	CEDA CI	C		/ 7500	1,070	NC			7,500	7,500	6,940	8,060	630	7-juil-00	7,500	7,500
FTSC	FILTISAC CI	B	26	8075 /		8,075	10	80,750	8,015	8,075	7,470	8,680	332	15-juil-08	8,000	9,950
NEIC	NEI CI	C		/ 3695	8	NC			3,725	3,725	3,450	4,000	225	28-juin-01	3,725	4,700
N TLC	NESTLE CI	B	5	75000 / 78000	7	78,000	18	1,404,000	78,000	78,000	72,150	83,850	5,220	22-juil-08	66,400	87,000
SEMC	CROWN SIEM CI	B	48	41005 /		41,005	152	6,232,760	40,995	41,005	37,930	44,080	2,250	1-juil-08	37,100	41,005
SGCC	SAGECO CI	C				NC			5,210	5,210	4,820	5,600	270	12-mars-04	5,210	5,210
SIVC	SIVOA CI	C	50	10000 / 10985	20	10,985	320	3,515,200	10,995	10,985	10,165	11,805	900	10-juil-08	8,000	12,210
SLBC	SOLIBRA CI	A	56	260000 /		NC			250,005	250,005	231,255	268,755	12,600	29-avr-08	230,000	371,000
SMBC	SMB CI	B		/ 59900	11	59,900	29	1,737,100	60,000	59,900	55,410	64,390	2,070	9-nov-07	58,000	62,000
STBC	SITAB CI	B	17	57000 / 61000	229	61,000	104	6,344,000	61,000	61,000	56,425	65,575	5,536	8-avr-08	49,900	61,005
TTRC	TRITURAF CI	C	28	4900 / 6525	19	NC			4,705	4,705	4,355	5,055	1,440	19-juil-02	4,300	5,500
UNLC	UNILEVER CI	A	1	100000 /		100,000	4	400,000	100,000	100,000	92,500	107,500	8,100	18-juil-08	38,700	105,015
UNXC	UNIWAX CI	B	6	24000 / 30000	13	NC			30,200	30,200	27,935	32,465	1,350	6-juin-03	11,000	30,200
TOTAL							637	19,713,810								
PUBLICS UTILITIES - SECTOR																
CIEC	CIE CI	B	135	18700 / 19000	286	19,000	322	6,118,000	18,705	19,000	17,575	20,425	1,494	1-juil-08	13,000	19,000
SDCC	SODE CI	B	165	12000 /		NC			12,000	12,000	11,100	12,900	900	1-juil-08	9,250	12,005
SNTS	SONATEL SN	A	1	180000 / 185000	31,328	185,000	43,000	7,955,000,000	178,000	185,000	171,125	198,875	9,900	30-avr-08	175,000	199,800
TOTAL							43,322	7,961,118,000								
FINANCIAL - SECTOR																
BICC	BICI CI	B	2	35020 /		NC			35,015	35,015	32,390	37,640	2,448	27-juin-08	30,000	37,000
BOAB	BANK OF AFRICA BN	B	30	39000 /		40,000	15	600,000	40,000	40,000	37,000	43,000	2,250	2-juin-08	37,000	40,000
BOAN	BANK OF AFRICA NG	C	13	36000 /		NC			36,015	36,015	33,315	38,715	2,250	26-juin-08	27,000	36,015
ETIT	ECOBANK TRANS. INCORP. TG	A	5,661	140 / 145	281,487	140	47,660	6,672,400	135	140	130	150	8.43	6-juin-08	125	178 (*)
SAFC	SAFCA CI	C	9	32505 /		NC			31,505	31,505	29,145	33,865	2,256	27-juil-07	25,025	31,505
SGBC	SGB CI	A	53	47000 /		47,000	37	1,739,000	47,000	47,000	43,475	50,525	3,260	24-juin-08	26,950	48,000
TOTAL							47,712	9,011,400								
TRANSPORTATION - SECTOR																
SDSC	SDV-SAGA CI	B	38	69010 / 69765	3	NC			69,000	69,000	63,825	74,175	4,461	15-mai-08	43,000	75,000
SVOC	SIVOM CI	C	2	5650 /		NC			5,650	5,650	5,230	6,070	270	5-juil-99	5,300	6,460
TOTAL																
AGRICULTURE - SECTOR																
PALC	PALM CI	A	64	27000 / 27450	4	27,000	402	10,854,000	27,000	27,000	24,975	29,025	225	21-juil-00	10,200	27,000
PHC	PH CI	C	14	21000 / 21500	905	21,500	108	2,322,000	21,000	21,500	19,890	23,110	450	21-juin-00	8,505	21,500
SICC	SICOR CI	C	273	5300 /		NC			5,295	5,295	4,900	5,690	1,919	25-sept-00	5,295	5,300
SOGC	SOGB CI	A	20	45000 / 51000	223	51,000	40	2,040,000	50,990	47,670ex-c	44,095	51,245	3,330	28-juil-08	28,045	51,000
SPHC	SAPH CI	A	177	39000 / 40000	1,548	40,000	263	10,520,000	40,000	40,000	37,000	43,000	2,520	3-juin-08	27,995	40,005
TOTAL							813	25,736,000								
DISTRIBUTION - SECTOR																
ABJC	ABIDJAN CATERING CI	C	1,119	6800 /		6,800	12	81,600	6,700	6,800	6,290	7,310	225	13-juil-00	4,200	6,800
BNBC	BERNABE CI	C	3	27505 /		NC			27,200	27,200	25,160	29,240	747	23-juil-07	20,000	30,045
CFAC	CFAO CI	B	6	22000 /		NC			21,510	21,510	19,900	23,120	1,805	11-juil-08	19,850	21,510
PRSC	PEYRISSAC CI	B	75	145000 /		NC			140,010	140,010	129,510	150,510	14,400	18-juil-08	54,515	149,425
SHEC	SHELL CI	B	36	33505 /		33,505	130	4,355,650	33,505	33,505	30,995	36,015	4,098.21	19-mai-08	16,200	35,500
SRIC	SARI CI	C		/ 65000	6	NC			65,000	65,000	60,125	69,875	5,643	11-juil-08	52,000	65,000
T TLC	TOTAL CI	B	68	109000 / 109000	7	NC			108,000	108,000	99,900	116,100	9,170	27-juin-08	90,000	115,000
TOTAL							142	4,437,250								
OTHERS SECTORS																
STAC	SETAO CI	C				NC			4,305	4,305	3,985	4,625			4,305	6,850
TOTAL																
TOTAL - STOCKS MARKET								92,626	8,020,016,460							

Legend
Mentions : NC: Unlisted Ex: Ex-coupon ou Ex-right SP: suspended DIF: differed
Classify Stock exchange Capitalization :
A: Companies having a stock exchange capitalization Higher than 100 billion FCFA.
B: Companies having a stock exchange capitalization Ranging between 10 billion FCFA and 100 billion FCFA.
C: Companies having a Lower stock exchange capitalization or equalizes to 10 billion FCFA. .
(*) Cours ajusté après fractionnement (cinq (5) actions nouvelles pour une (1) action ancienne, le 09-06-2008)

RIGHTS MARKET

Symbol	Security	Qty	Cours Bid. /Ask.	Qty	Curr. Price	Volume	Value	Previous Price	Curr. Price	Max. Variances Next Session	Parity	Trading Period	
												Start	End
TOTAL-RIGHTS MARKET													

Legend
Parity: y pour x signifie y droits pour x action nouvelle

BONDS MARKET

July 23, 2008 Session

Symbol	Security	Qty	Cours Bid./Ask.	Qty	Curr. Price	Volume	Value	Previous Price	Curr. Price	Max. Variances Next Session	Coupon paid	Type Amort	Coupon paid			
													Period	Next Session	Expiry	
REGIONAL BOND																
BIDC.O1	BIDC 5,60% 2006-2013				NC			10,000	10,000	9,250	10,750	530.93	ACD	A	560	11-août
BNDM.O1	BNDA DU MALI 6.50% 2004-2009				NC			10,000	10,000	9,250	10,750	158.03	AC	A	565.50	12-avr
BOAB.O1	BOA-BENIN 6.60% 2001-2008				NC			100,000	100,000	92,500	107,500	4,525.87	AC	A	6,204	30-oct
BOABF.O1	BOA-Burkina F. 5.90% 2006-2011		/ 10000	400	NC			10,000	10,000	9,250	10,750	327.54	AC	A	555	20-déc
BOAD.O3	BOAD 6,25% 1999-2009				NC			50,000	50,000	46,250	53,750	1,477.12	ACD	A	3,125	1-févr
BOAD.O5	BOAD 5,85% 2001-2008				NC			10,000	10,000	9,250	10,750	321.27	ACD	A	585	4-janv
BOAD.O6	BOAD 5,35% 2004-2011				NC			10,000	10,000	9,250	10,750	381.52	ACD	A	535	5-nov
BOAD.O7	BOAD 5% 2005-2013				NC			10,000	10,000	9,250	10,750	284.15	ACD	A	500	28-déc
BOAD.O8	BOAD 4,50% 2005-2011				NC			10,000	10,000	9,250	10,750	255.74	ACD	A	450	28-déc
BOAD.O9	BOAD 5% 2006-2014				NC			10,000	10,000	9,250	10,750	228.14	ACD	A	500	7-févr
BOAD.O10	BOAD 4,75% 2006-2012				NC			10,000	10,000	9,250	10,750	216.73	ACD	A	475	7-févr
BOAM.O1	BOA-Mali 5.75% 2006-2011				NC			10,000	10,000	9,250	10,750	295.08	AC	A	500	20-déc.
CAAB.O2	CAA BENIN 6% 2007-2012				NC			9,980	9,980	9,235	10,725	295.08	ACD	A	600	25-janv.
CEB.O1	CEB 6.50% 2003-2010				6,667	4	26,668	6,667	6,667	6,170	7,165	15.42	ACD	A	433	10-juil.
CEB.O2	CEB 6,50% 2004-2011				NC			10,000	10,000	9,250	10,750	65.89	ACD	A	650	16-juin
CLTB.O1	CELTEL BF 7.15% 2003-2009				NC			10,000	10,000	9,250	10,750	616.92	ACD	A	672	22-août
CLTB.O2	CELTEL BURKINA 6.35% 2007-2013				NC			10,000	10,000	9,250	10,750	256.05	ACD	S	298.45	17/02-08
EOS.O1	Etat SENEGAL 5.50% 2005-2010		/ 10000	85,000	NC			10,000	10,000	9,250	10,750	546.99	ACD	A	550	25-juil.
EOS.O2	Etat Sénégal 5,50% 2007-2012		/ 10000	30	NC			10,000	10,000	9,250	10,750	419.26	ACD	A	550	18-oct.
EOT.O1	ETAT DU TOGO 6,50% 2006-20				NC			10,000	10,000	9,250	10,750	259.29	ACD	A	650	28-févr.
ONTBF.O1	ONATEL 6.65% 2005-2011				NC			10,000	10,000	9,250	10,750	78.77	ACD	A	625	7-juin
PADS.O1	PAD 6.50% 2004-2011				NC			10,000	10,000	9,250	10,750	13.39	ACD	A	611	15-juil.
SEM.O1	SEMA 6,85% 2007-2012				NC			10,000	10,000	9,250	10,750	97.70	ACD	S	297.975	24/05-11
SHAF.O1	SHELTERAFRIQUE 6.25% 2003				NC			10,000	10,000	9,250	10,750	262.98	ACD	S	312.50	20/02-08
STRAC.O1	SOTRA 6.80% 2007-2012				10,000	11	110,000	10,000	10,000	9,250	10,750	35.01	AC	A	639	3-juil.
TPCI.O5	TPCI 6.50% 2006-2009		/ 10100	500	NC			10,000	10,000	9,250	10,750	10.68	IF	A	650	17-juil.
TPCI.O6	TPCI 6% 2007-2010		/ 10000	411	NC			10,000	10,000	9,250	10,750	108.49	IF	A	600	18-mai
TOTAL						15	136,668									
KOLAS BOND																
AFD.O1	AFD 5,25% 2008-2016				NC			10,000	10,000	9,250	10,750	191	IF	A	525	12-mars
SFI.O1	SFI 4,75% 2006-2011				NC			10,000	10,000	9,250	10,750	283	IF	A	475	18-déc.
TOTAL																
TOTAL-BONDS MARKET						15	136,668									

Legend

Type Amort: Type d'Amortissement - IF: IN FINE - AC: AMORTISSEMENT CONSTANT - AD: AMORTISSEMENT DEGRESSIF - ACD: AMORTISSEMENT DIFFERE CONSTANT

Period : Coupons Payment Period - A: yearly - S: semi annual - T: Quaterly

Expiry : Interest Payment expiry

Mentions : NC: Unlisted Ex: Ex-coupon ou Ex-right SP: suspended DIF: differed

Notices, Decisions, Instructions & Circulars of the day

Notices and Instructions are available on the National Branch Offices (ANB) of Stock Exchange and on BRVM Website: www.brvm.org